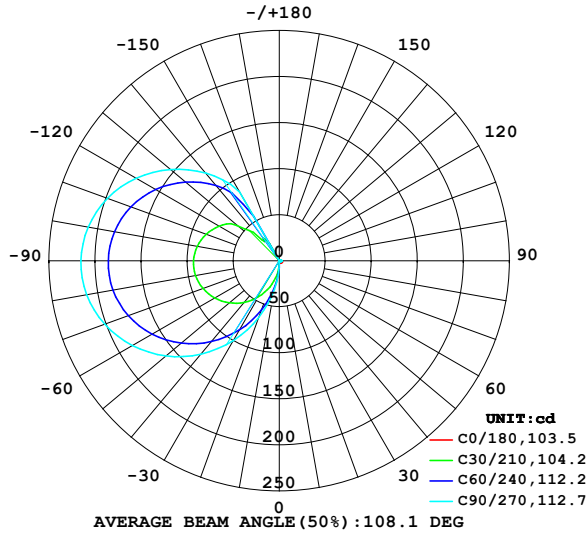


## LUMINAIRE PHOTOMETRIC TEST REPORT

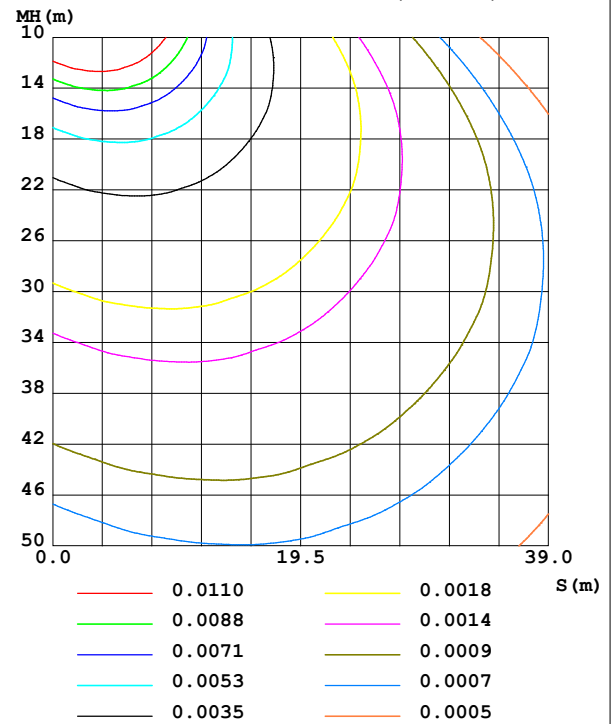
NAME: 99LPL094/GBR	TYPE:	WEIGHT: 1
SPEC.:	DIM.: 300 x 110 x 25	SERIAL No.: 0
MFR.: Elmark Industries JSC	SUR.: rectangle	Shielding Angle:

DATA OF LAMP		PHOTOMETRIC DATA			
MODEL	99LPL094/GBR	I <sub>max</sub> (cd)	215.3	S/MH (C0/180)	0.97
NOMINAL POWER (W)	9.4	LOR (%)	97.2	S/MH (C90/270)	11.35
RATED VOLTAGE (V)	230	TOTAL FLUX (lm)	593.95	η UP, DN (C0-180)	0.5, 0.6
NOMINAL FLUX (lm)	611	CIE CLASS	DIFFUSE	η UP, DN (C180-360)	45.6, 50.6
LAMPS INSIDE	1	η up (%)	46.0	CIBSE SHR NOM	0.00
TEST VOLTAGE (V)	230	η down (%)	51.2	CIBSE SHR MAX	0.00

LUMINOUS INTENSITY DISTRIBUTION DIAGRAM



C0 PLANE ISOLUX DIAGRAM (UNIT: lx)



C Range: 0 - 360DEG  
C Interval: 10.0DEG  
Test Speed: MEDIUM  
Temperature: 25.3°C  
Operators:  
Test Date: 14 December 2022

γ Range: 0 - 150DEG  
γ Interval: 2.5DEG  
Test System: EVERFINE GO-2000A\_V1 SYSTEM V2.00.456  
Humidity: 65.0%  
Test Distance: 6.265m [K=1.0000]  
Remarks:

### ZONAL FLUX DIAGRAM

#### ZONAL FLUX DIAGRAM:

$\gamma$	C0	C45	C90	C135	C180	C225	C270	C315	$\gamma$	$\Phi$ zone	$\Phi$ total	%lum, lamp
10	1.960	1.080	0.8585	0.9331	1.419	22.23	31.38	20.57	0- 10	0.6891	0.6891	0.12,0.11
20	2.284	0.7872	0.7004	0.6948	1.242	44.83	65.46	41.32	10- 20	4.483	5.172	0.87,0.85
30	2.582	0.7065	0.9533	0.6608	1.083	67.88	99.98	62.42	20- 30	11.90	17.08	2.87,2.79
40	2.814	0.8549	1.248	0.8348	0.9242	89.52	132.4	82.25	30- 40	22.28	39.36	6.63,6.44
50	2.970	1.032	1.492	1.024	0.7712	108.7	160.9	99.72	40- 50	34.39	73.75	12.4,12.1
60	2.926	1.165	1.717	1.150	0.5739	124.3	184.1	114.0	50- 60	46.65	120.4	20.3,19.7
70	2.594	1.231	1.879	1.233	0.4062	135.8	201.7	124.4	60- 70	57.47	177.9	29.9,29.1
80	2.258	1.266	1.962	1.271	0.3208	142.5	212.3	130.5	70- 80	65.45	243.3	41,39.8
90	1.811	1.264	1.962	1.274	0.2944	144.1	215.3	131.9	80- 90	69.49	312.8	52.7,51.2
100	1.290	1.234	1.901	1.250	0.2855	140.7	210.7	128.9	90-100	69.05	381.9	64.3,62.5
110	0.5805	1.142	1.745	1.173	0.2767	132.2	198.5	121.2	100-110	64.15	446.0	75.1,73
120	0.2973	1.014	1.553	1.055	0.2738	119.1	179.4	109.2	110-120	55.32	501.3	84.4,82.1
130	0.2855	0.8607	1.309	0.9218	0.2679	101.7	154.3	93.44	120-130	43.48	544.8	91.7,89.2
140	0.2767	0.7079	1.056	0.7755	0.2679	76.74	124.2	72.73	130-140	30.46	575.3	96.9,94.2
150	0.2649	0.5651	0.8087	0.6494	0.2708	31.54	86.29	29.23	140-150	17.39	592.7	99.8,97
160	0	0	0	0	0	0	0	0	150-160	1.283	593.9	100,97.2
170	0	0	0	0	0	0	0	0	160-170	0	593.9	100,97.2
180	0	0	0	0	0	0	0	0	170-180	0	593.9	100,97.2
DEG	LUMINOUS INTENSITY:cd									UNIT:lm		

Conical surface Flux(90deg): 54.996 lm

%lum = 9.3%

%lamp = 9.0%

Conical surface Flux(130deg): 147.94 lm

%lum = 24.9%

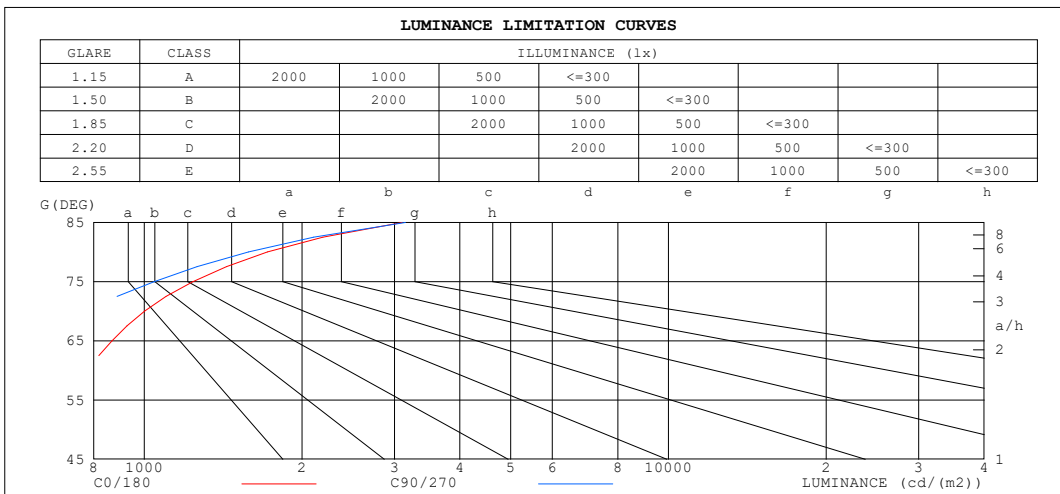
%lamp = 24.2%

C Range: 0 - 360DEG  
C Interval: 10.0DEG  
Test Speed: MEDIUM  
Temperature:25.3°C  
Operators:  
Test Date:14 December 2022

$\gamma$  Range: 0 - 150DEG  
 $\gamma$  Interval: 2.5DEG  
Test System:EVERFINE GO-2000A\_V1 SYSTEM V2.00.456  
Humidity:65.0%  
Test Distance:6.265m [K=1.0000]  
Remarks:

### LUMINANCE LIMITATION CURVES

NAME: 99LPL094/GBR	TYPE:	WEIGHT: 1
SPEC.:	DIM.: 300 x 110 x 25	SERIAL No.: 0
MFR.: Elmark Industries JSC	SUR.: rectangle	Shielding Angle:



LUMINANCE cd/(m2)		
G (DEG)	C0/180	C90/270
85	3106	3150
80	1718	1581
75	1238	1044
70	1002	769
65	868	599
60	773	481
55	685	393
50	610	325
45	544	272

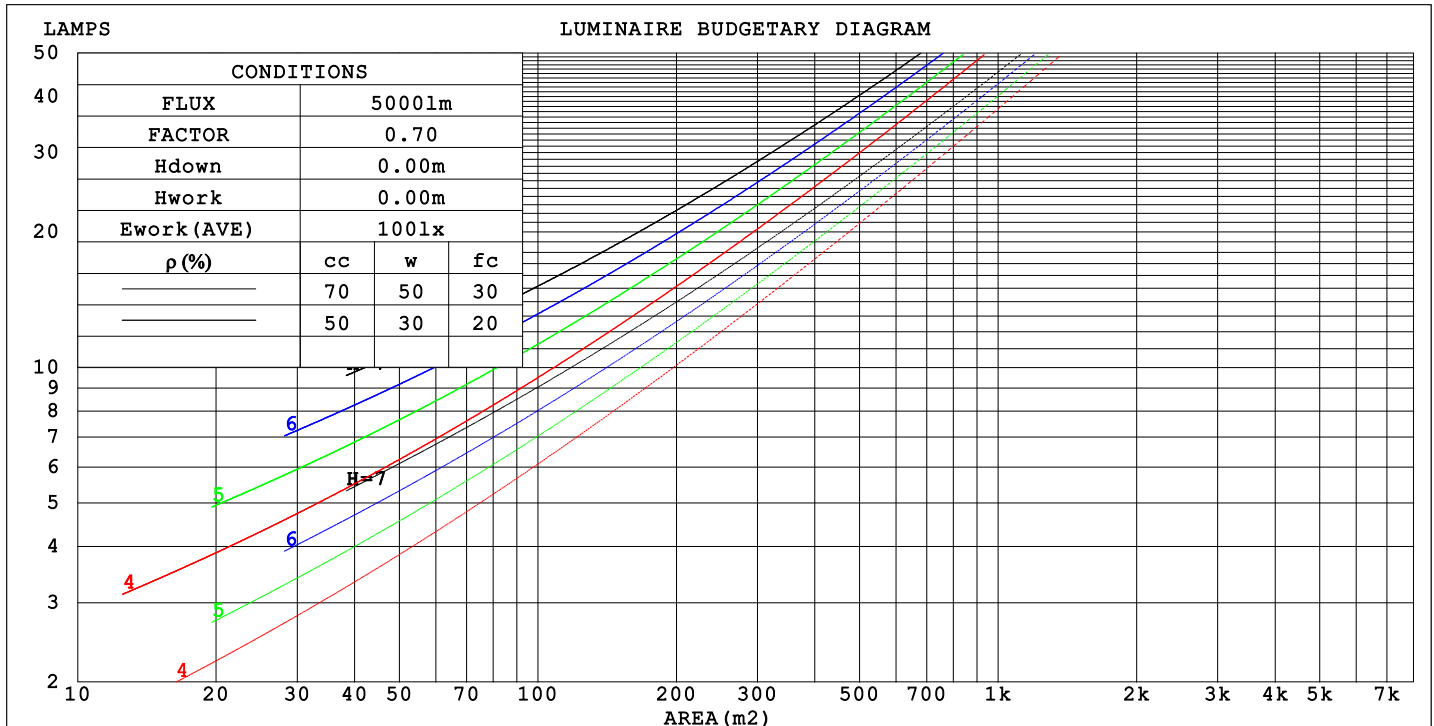
C Range: 0 - 360DEG  
C Interval: 10.0DEG  
Test Speed: MEDIUM  
Temperature: 25.3°C  
Operators:  
Test Date: 14 December 2022

γ Range: 0 - 150DEG  
γ Interval: 2.5DEG  
Test System: EVERFINE GO-2000A\_V1 SYSTEM V2.00.456  
Humidity: 65.0%  
Test Distance: 6.265m [K=1.0000]  
Remarks:

## CU AND LUMINAIRE BUDGETARY ESTIMATE DIAGRAM

NAME: 99LPL094/GBR	TYPE:	WEIGHT: 1
SPEC.:	DIM.: 300 x 110 x 25	SERIAL No.: 0
MFR.: Elmark Industries JSC	SUR.: rectangle	Shielding Angle:

pcc	80%			70%			50%			30%			10%			0
pw	50%	30%	10%	50%	30%	10%	50%	30%	10%	50%	30%	10%	50%	30%	10%	0
pfc	20%			20%			20%			20%			20%			0
RCR	RCR:Room Cavity Ratio															



C Range: 0 - 360DEG  
C Interval: 10.0DEG  
Test Speed: MEDIUM  
Temperature:25.3°C  
Operators:  
Test Date:14 December 2022

γ Range: 0 - 150DEG  
γ Interval: 2.5DEG  
Test System:EVERFINE GO-2000A\_V1 SYSTEM V2.00.456  
Humidity:65.0%  
Test Distance:6.265m [K=1.0000]  
Remarks:

## WEC AND CCEC

NAME: 99LPL094/GBR	TYPE:	WEIGHT: 1
SPEC.:	DIM.: 300 x 110 x 25	SERIAL No.: 0
MFR.: Elmark Industries JSC	SUR.: rectangle	Shielding Angle:

pcc	80%			70%			50%			30%			10%			0
pw	50%	30%	10%	50%	30%	10%	50%	30%	10%	50%	30%	10%	50%	30%	10%	0
pfc	20%			20%			20%			20%			20%			0
RCR	RCR:Room Cavity Ratio						Wall Exitance Coefficients(WEC)									
0.0																
1.0	.433	.246	.078	.412	.235	.075	.372	.214	.068	.336	.194	.062	.303	.175	.057	
2.0	.356	.195	.060	.336	.185	.057	.300	.167	.052	.267	.150	.047	.236	.133	.042	
3.0	.307	.163	.049	.289	.155	.047	.256	.139	.042	.226	.124	.038	.197	.109	.034	
4.0	.271	.141	.041	.255	.134	.039	.225	.119	.036	.197	.106	.032	.170	.093	.028	
5.0	.243	.124	.036	.229	.117	.034	.201	.104	.031	.175	.092	.027	.150	.080	.024	
6.0	.221	.111	.032	.207	.105	.030	.181	.093	.027	.157	.082	.024	.135	.071	.021	
7.0	.202	.100	.028	.190	.094	.027	.166	.084	.024	.143	.074	.021	.123	.064	.019	
8.0	.186	.091	.026	.175	.086	.024	.153	.076	.022	.132	.067	.019	.112	.058	.017	
9.0	.173	.084	.023	.162	.079	.022	.141	.070	.020	.122	.061	.018	.104	.053	.015	
10.0	.161	.077	.021	.151	.073	.020	.132	.064	.018	.114	.056	.016	.096	.048	.014	

pcc	80%			70%			50%			30%			10%			0
pw	50%	30%	10%	50%	30%	10%	50%	30%	10%	50%	30%	10%	50%	30%	10%	0
pfc	20%			20%			20%			20%			20%			0
RCR	RCR:Room Cavity Ratio						Ceiling Cavity Exitance Coefficients (CCEC)									
0.0	.536	.536	.536	.458	.458	.458	.313	.313	.313	.180	.180	.180	.057	.057	.057	
1.0	.538	.504	.474	.460	.433	.408	.315	.298	.282	.181	.172	.164	.058	.055	.053	
2.0	.533	.484	.442	.456	.416	.382	.313	.288	.267	.180	.168	.156	.058	.054	.051	
3.0	.526	.469	.424	.451	.405	.367	.310	.281	.258	.179	.164	.152	.057	.053	.050	
4.0	.519	.458	.412	.445	.396	.358	.306	.276	.252	.177	.162	.149	.057	.053	.049	
5.0	.512	.449	.404	.439	.389	.351	.303	.272	.248	.175	.159	.147	.056	.052	.048	
6.0	.504	.442	.398	.434	.383	.346	.299	.268	.245	.174	.158	.146	.056	.052	.048	
7.0	.497	.436	.394	.428	.378	.343	.296	.265	.243	.172	.156	.145	.056	.051	.048	
8.0	.491	.431	.390	.423	.374	.340	.292	.263	.241	.170	.155	.144	.055	.051	.048	
9.0	.485	.427	.388	.418	.371	.338	.289	.261	.240	.169	.154	.143	.055	.050	.047	
10.0	.479	.423	.386	.413	.368	.337	.287	.259	.239	.167	.153	.143	.054	.050	.047	

C Range: 0 - 360DEG  
C Interval: 10.0DEG  
Test Speed: MEDIUM  
Temperature:25.3°C  
Operators:  
Test Date:14 December 2022

γ Range: 0 - 150DEG  
γ Interval: 2.5DEG  
Test System:EVERFINE GO-2000A\_V1 SYSTEM V2.00.456  
Humidity:65.0%  
Test Distance:6.265m [K=1.0000]  
Remarks:

### UGR(Unified Glare Rating) Table

NAME: 99LPL094/GBR					TYPE:					WEIGHT: 1				
SPEC.:					DIM.: 300 x 110 x 25					SERIAL No.: 0				
MFR.: Elmark Industries JSC					SUR.: rectangle					Shielding Angle:				
ceiling/cavity	0.7	0.7	0.5	0.5	0.3	0.7	0.7	0.5	0.5	0.3				
walls	0.5	0.3	0.5	0.3	0.3	0.5	0.3	0.5	0.3	0.3				
working plane	0.2	0.2	0.2	0.2	0.2	0.2	0.2	0.2	0.2	0.2				
Room dimensions					Viewed crosswise					Viewed endwise				
x = 2H y = 2H	-6.9	-5.7	-6.0	-4.8	-3.7	-4.2	-3.1	-3.4	-2.2	-1.1				
3H	-3.4	-2.3	-2.5	-1.4	-0.3	-0.3	0.7	0.5	1.6	2.8				
4H	-1.3	-0.3	-0.4	0.6	1.8	1.8	2.8	2.7	3.7	4.9				
6H	1.3	2.2	2.1	3.1	4.3	4.1	5.0	5.0	6.0	7.2				
8H	2.8	3.7	3.7	4.6	5.8	5.4	6.3	6.3	7.2	8.4				
12H	4.5	5.4	5.4	6.3	7.6	6.8	7.6	7.7	8.6	9.8				
4H 2H	-5.7	-4.7	-4.8	-3.8	-2.6	-3.8	-2.8	-2.9	-1.8	-0.7				
3H	-2.6	-1.7	-1.7	-0.8	0.4	0.4	1.3	1.3	2.2	3.4				
4H	-0.7	0.1	0.2	1.0	2.2	2.7	3.5	3.7	4.5	5.7				
6H	1.5	2.2	2.4	3.2	4.4	5.3	6.0	6.2	7.0	8.2				
8H	2.8	3.5	3.8	4.5	5.8	6.6	7.3	7.6	8.3	9.6				
12H	4.6	5.2	5.6	6.2	7.5	8.2	8.8	9.2	9.8	11.1				
8H 4H	0.3	1.0	1.2	1.9	3.2	3.0	3.7	4.0	4.7	6.0				
6H	2.4	3.0	3.4	4.0	5.3	5.9	6.5	6.9	7.5	8.8				
8H	3.6	4.2	4.6	5.2	6.5	7.5	8.0	8.5	9.0	10.3				
12H	5.2	5.6	6.2	6.7	8.0	9.3	9.8	10.3	10.8	12.1				
12H 4H	0.8	1.4	1.7	2.4	3.7	3.0	3.7	4.0	4.7	5.9				
6H	3.0	3.5	3.9	4.5	5.8	6.0	6.5	7.0	7.5	8.8				
8H	4.2	4.7	5.2	5.7	7.0	7.7	8.2	8.7	9.2	10.5				
Variations with the observer position at spacings(CIE Pub.117):														
S = 1.0H	+ 0.9 / - 0.7					+ 0.1 / - 0.1								
1.5H	+ 1.8 / - 1.4					+ 0.2 / - 0.3								
2.0H	+ 2.5 / - 1.9					+ 0.3 / - 0.4								

CIE Pub.117, 611.0 lm Total Lamp Luminous Flux Correct (8log(F/F0) = -1.7)  
Area: 0.007 m2

C Range: 0 - 360DEG  
C Interval: 10.0DEG  
Test Speed: MEDIUM  
Temperature:25.3°C  
Operators:  
Test Date:14 December 2022

γ Range: 0 - 150DEG  
γ Interval: 2.5DEG  
Test System:EVERFINE GO-2000A\_V1 SYSTEM V2.00.456  
Humidity:65.0%  
Test Distance:6.265m [K=1.0000]  
Remarks:

### UTILIZATION FACTORS TABLE

NAME: 99LPL094/GBR	TYPE:	WEIGHT: 1
SPEC.:	DIM.: 300 x 110 x 25	SERIAL No.: 0
MFR.: Elmark Industries JSC	SUR.: rectangle	Shielding Angle:

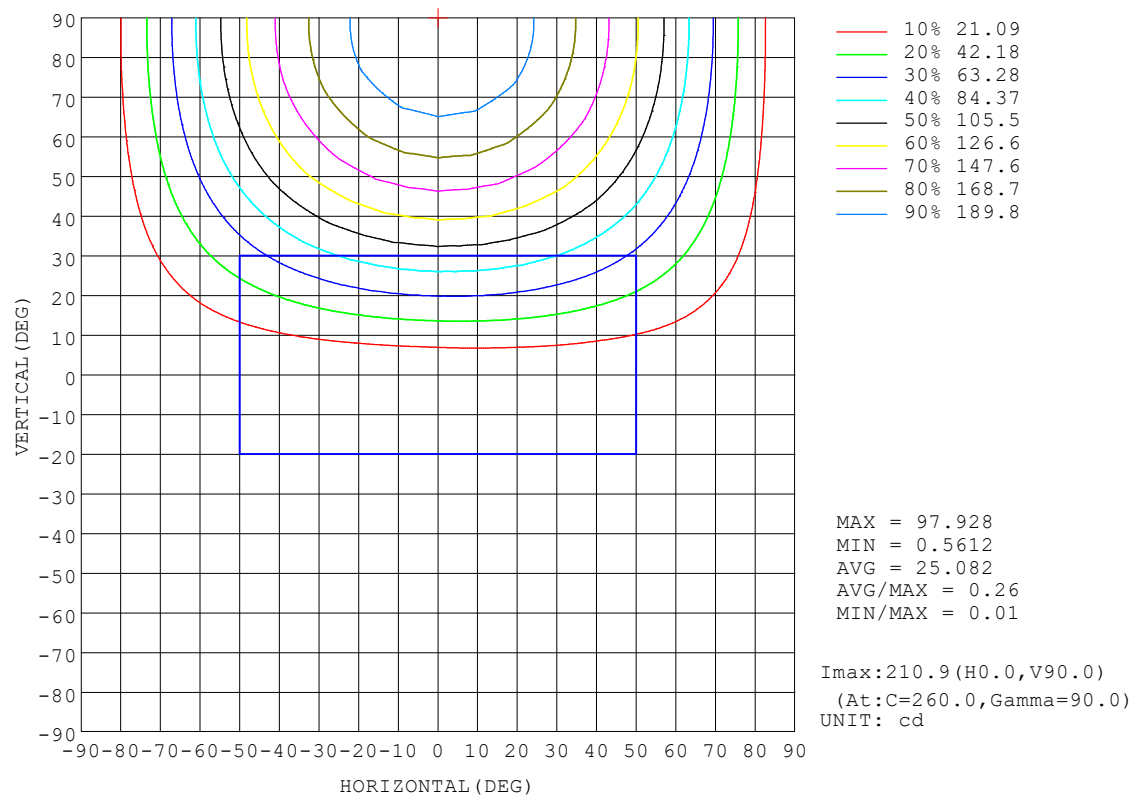
REFLECTANCE										
Ceiling	0.8	0.8	0.8	0.7	0.7	0.7	0.5	0.5	0.5	0
Walls	0.7	0.5	0.3	0.7	0.5	0.3	0.7	0.5	0.3	0
Working plane	0.2	0.2	0.2	0.2	0.2	0.2	0.2	0.2	0.2	0
ROOM INDEX	UTILIZATION FACTORS (PERCENT) $k(RI) \times RCR = 5$									
$k = 0.60$	33	20	13	31	19	12	28	18	11	4
0.80	41	27	18	39	26	18	34	23	16	7
1.00	48	33	24	45	32	23	39	30	21	10
1.25	55	40	30	51	38	29	44	33	26	13
1.50	60	46	35	56	43	34	48	37	30	15
2.00	68	54	44	63	51	42	54	44	36	19
2.50	73	60	51	67	56	47	57	48	41	22
3.00	77	65	56	71	61	52	60	52	46	25
4.00	82	72	64	76	67	60	64	58	52	29
5.00	86	77	69	79	71	65	67	61	56	32
ROOM INDEX	UF(total)									Direct
According to DIN EN 13032-2 2004			Suspended					SHRNOM = 1.25		

C Range: 0 - 360DEG  
C Interval: 10.0DEG  
Test Speed: MEDIUM  
Temperature: 25.3°C  
Operators:  
Test Date: 14 December 2022

γ Range: 0 - 150DEG  
γ Interval: 2.5DEG  
Test System: EVERFINE GO-2000A\_V1 SYSTEM V2.00.456  
Humidity: 65.0%  
Test Distance: 6.265m [K=1.0000]  
Remarks:

# ISOCANDELA DIAGRAM

NAME: 99LPL094/GBR	TYPE:	WEIGHT: 1
SPEC.:	DIM.: 300 x 110 x 25	SERIAL No.: 0
MFR.: Elmark Industries JSC	SUR.: rectangle	Shielding Angle:



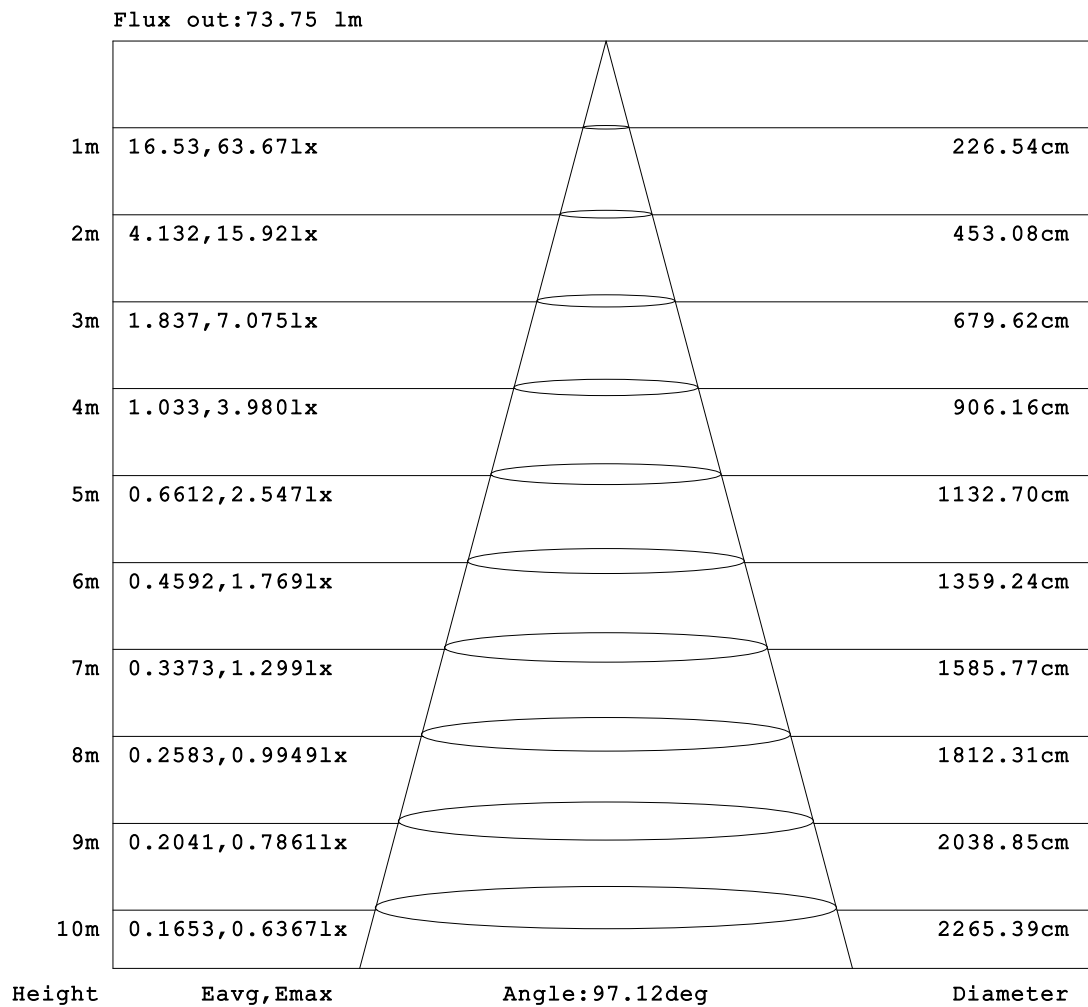
C Range: 0 - 360DEG  
 C Interval: 10.0DEG  
 Test Speed: MEDIUM  
 Temperature: 25.3°C  
 Operators:  
 Test Date: 14 December 2022

γ Range: 0 - 150DEG  
 γ Interval: 2.5DEG  
 Test System: EVERFINE GO-2000A\_V1 SYSTEM V2.00.456  
 Humidity: 65.0%  
 Test Distance: 6.265m [K=1.0000]  
 Remarks:



**AAI Figure**

NAME: 99LPL094/GBR	TYPE:	WEIGHT: 1
SPEC.:	DIM.: 300 x 110 x 25	SERIAL No.: 0
MFR.: Elmark Industries JSC	SUR.: rectangle	Shielding Angle:



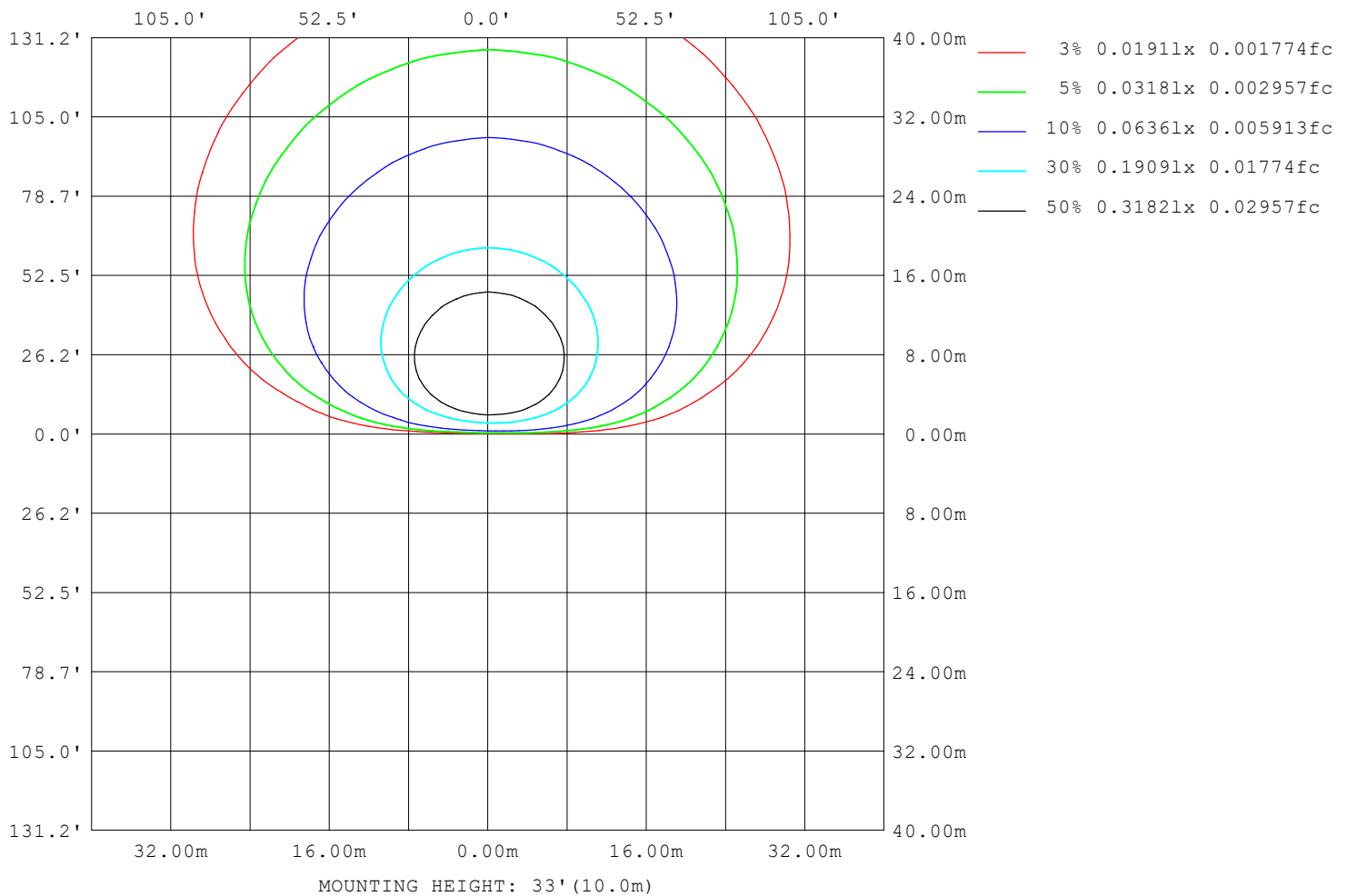
**Note:** The Curves indicate the illuminated area and the average illumination when the luminaire is at different distance.

C Range: 0 - 360DEG  
 C Interval: 10.0DEG  
 Test Speed: MEDIUM  
 Temperature: 25.3°C  
 Operators:  
 Test Date: 14 December 2022

γ Range: 0 - 150DEG  
 γ Interval: 2.5DEG  
 Test System: EVERFINE GO-2000A\_V1 SYSTEM V2.00.456  
 Humidity: 65.0%  
 Test Distance: 6.265m [K=1.0000]  
 Remarks:

**ISOLUX DIAGRAM**

NAME: 99LPL094/GBR	TYPE:	WEIGHT: 1
SPEC.:	DIM.: 300 x 110 x 25	SERIAL No.: 0
MFR.: Elmark Industries JSC	SUR.: rectangle	Shielding Angle:



C Range: 0 - 360DEG  
 C Interval: 10.0DEG  
 Test Speed: MEDIUM  
 Temperature: 25.3°C  
 Operators:  
 Test Date: 14 December 2022

γ Range: 0 - 150DEG  
 γ Interval: 2.5DEG  
 Test System: EVERFINE GO-2000A\_V1 SYSTEM V2.00.456  
 Humidity: 65.0%  
 Test Distance: 6.265m [K=1.0000]  
 Remarks:

### LED Avg.L Report

NAME: 99LPL094/GBR	TYPE:	WEIGHT: 1
SPEC.:	DIM.: 300 x 110 x 25	SERIAL No.: 0
MFR.: Elmark Industries JSC	SUR.: rectangle	Shielding Angle:

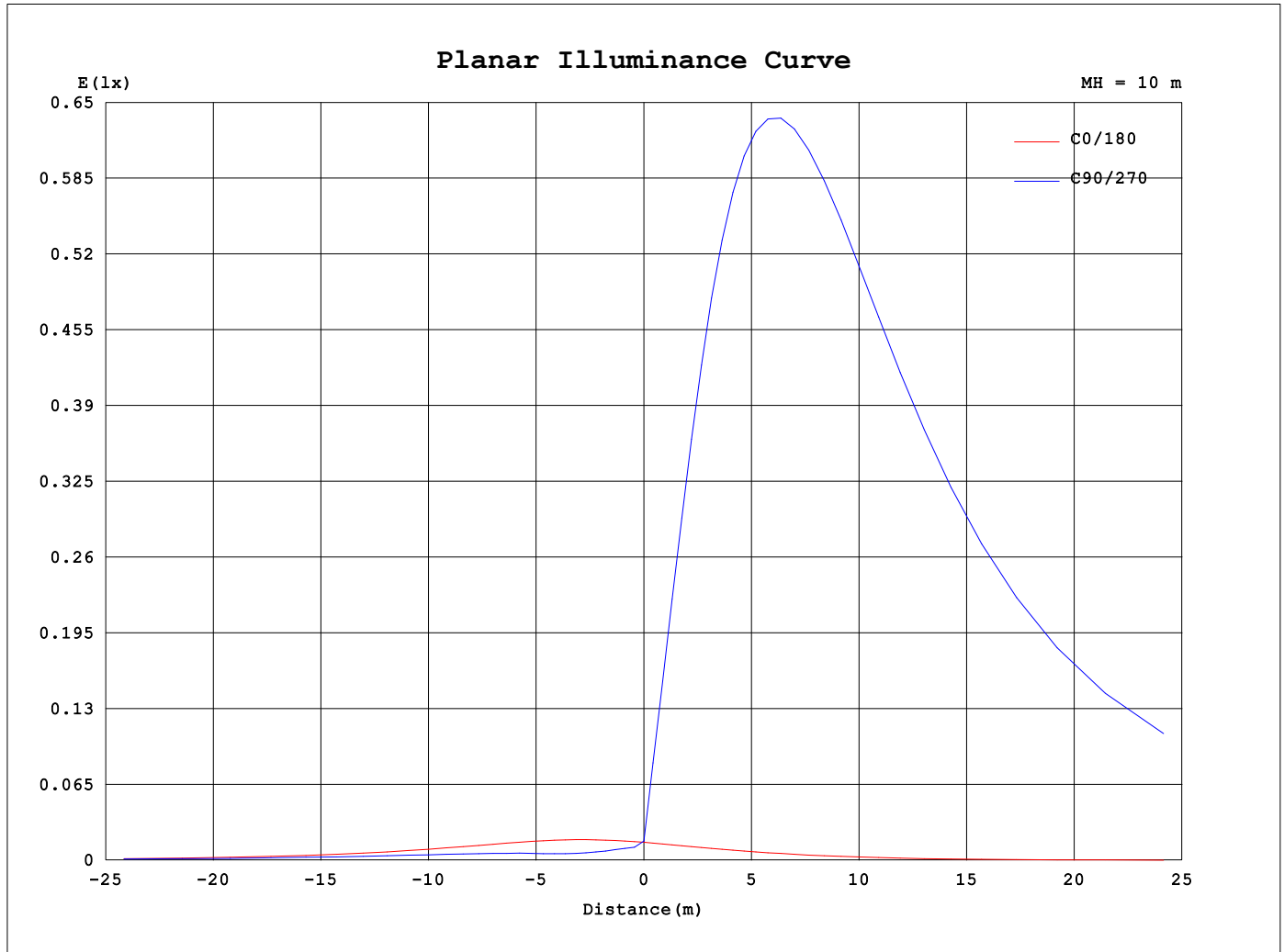
AvgL	cd/m2
L_0~180 (65) av	550
L_0~180 (75) av	767
L_0~180 (85) av	1928
L_90~270 (65) av	33046
L_90~270 (75) av	57920
L_90~270 (85) av	177630
L_45 (65) av	21433
L_45 (75) av	37424
L_45 (85) av	114430

Standard: GB/T 29293-2012

C Range: 0 - 360DEG  
C Interval: 10.0DEG  
Test Speed: MEDIUM  
Temperature:25.3°C  
Operators:  
Test Date:14 December 2022

γ Range: 0 - 150DEG  
γ Interval: 2.5DEG  
Test System:EVERFINE GO-2000A\_V1 SYSTEM V2.00.456  
Humidity:65.0%  
Test Distance:6.265m [K=1.0000]  
Remarks:

# Planar Illuminance Curve



C Range: 0 - 360DEG  
 C Interval: 10.0DEG  
 Test Speed: MEDIUM  
 Temperature: 25.3°C  
 Operators:  
 Test Date: 14 December 2022

γ Range: 0 - 150DEG  
 γ Interval: 2.5DEG  
 Test System: EVERFINE GO-2000A\_V1 SYSTEM V2.00.456  
 Humidity: 65.0%  
 Test Distance: 6.265m [K=1.0000]  
 Remarks:

## LUMINOUS DISTRIBUTION INTENSITY DATA

NAME: 99LPL094/GBR	TYPE:	WEIGHT: 1
SPEC.:	DIM.: 300 x 110 x 25	SERIAL No.: 0
MFR.: Elmark Industries JSC	SUR.: rectangle	Shielding Angle:

Table--1

UNIT: cd

C (DEG) γ (DEG)	0	10	20	30	40	50	60	70	80	90	100	110	120	130	140	150	160	170	180
0	1.67	1.67	1.67	1.67	1.67	1.67	1.67	1.67	1.67	1.67	1.67	1.67	1.67	1.67	1.67	1.67	1.67	1.67	1.67
5	1.81	1.32	1.30	1.24	1.25	1.17	1.19	1.10	1.12	1.06	1.10	1.04	1.08	1.02	1.06	1.03	1.07	1.06	1.54
10	1.96	1.26	1.22	1.13	1.12	1.04	1.04	0.93	0.92	0.86	0.89	0.87	0.93	0.90	0.96	0.94	1.01	1.01	1.42
15	2.12	1.20	1.12	0.98	0.95	0.87	0.90	0.81	0.79	0.73	0.78	0.75	0.83	0.80	0.83	0.83	0.92	0.96	1.32
20	2.28	1.15	1.05	0.89	0.84	0.74	0.75	0.70	0.71	0.70	0.71	0.69	0.72	0.66	0.73	0.73	0.84	0.91	1.24
25	2.43	1.06	0.95	0.82	0.76	0.69	0.71	0.74	0.76	0.79	0.77	0.74	0.68	0.64	0.66	0.68	0.80	0.85	1.16
30	2.58	0.98	0.84	0.70	0.69	0.72	0.80	0.89	0.92	0.95	0.93	0.89	0.80	0.69	0.63	0.61	0.70	0.77	1.08
35	2.71	0.92	0.77	0.65	0.68	0.83	0.92	1.02	1.07	1.10	1.08	1.02	0.92	0.80	0.66	0.59	0.63	0.71	1.01
40	2.81	0.83	0.70	0.65	0.78	0.93	1.04	1.15	1.20	1.25	1.22	1.16	1.04	0.91	0.76	0.61	0.59	0.65	0.92
45	2.91	0.76	0.64	0.69	0.86	1.03	1.16	1.27	1.33	1.38	1.35	1.29	1.16	1.01	0.84	0.69	0.55	0.58	0.86
50	2.97	0.68	0.59	0.76	0.93	1.13	1.26	1.38	1.45	1.49	1.47	1.40	1.27	1.12	0.93	0.75	0.55	0.53	0.77
55	2.97	0.59	0.58	0.82	1.02	1.21	1.35	1.47	1.56	1.61	1.58	1.50	1.36	1.19	1.01	0.81	0.59	0.48	0.67
60	2.93	0.51	0.62	0.87	1.07	1.26	1.43	1.57	1.67	1.72	1.68	1.59	1.44	1.25	1.05	0.86	0.63	0.46	0.57
65	2.78	0.46	0.65	0.88	1.08	1.31	1.50	1.65	1.76	1.81	1.78	1.68	1.51	1.30	1.09	0.89	0.67	0.46	0.48
70	2.59	0.46	0.67	0.88	1.11	1.35	1.56	1.72	1.83	1.88	1.84	1.73	1.56	1.34	1.12	0.89	0.68	0.48	0.41
75	2.43	0.46	0.67	0.87	1.13	1.38	1.60	1.77	1.88	1.93	1.90	1.78	1.61	1.38	1.14	0.89	0.68	0.48	0.35
80	2.26	0.44	0.66	0.87	1.13	1.39	1.63	1.80	1.92	1.96	1.93	1.81	1.63	1.39	1.16	0.89	0.68	0.46	0.32
85	2.05	0.42	0.64	0.85	1.14	1.39	1.65	1.80	1.93	1.96	1.95	1.81	1.65	1.39	1.16	0.89	0.68	0.45	0.30
90	1.81	0.40	0.63	0.85	1.14	1.39	1.65	1.79	1.94	1.96	1.95	1.81	1.65	1.39	1.16	0.88	0.67	0.45	0.29
95	1.56	0.40	0.62	0.84	1.14	1.37	1.65	1.77	1.94	1.94	1.95	1.79	1.65	1.38	1.16	0.88	0.67	0.45	0.29
100	1.29	0.39	0.61	0.82	1.12	1.34	1.62	1.73	1.89	1.90	1.90	1.75	1.62	1.35	1.15	0.87	0.67	0.45	0.29
105	0.98	0.39	0.60	0.79	1.09	1.29	1.57	1.67	1.83	1.83	1.84	1.69	1.57	1.31	1.12	0.84	0.66	0.45	0.28
110	0.58	0.38	0.58	0.76	1.04	1.24	1.49	1.60	1.75	1.75	1.77	1.62	1.51	1.26	1.08	0.82	0.64	0.44	0.28
115	0.33	0.38	0.56	0.73	0.99	1.17	1.41	1.51	1.66	1.65	1.67	1.54	1.43	1.20	1.04	0.79	0.63	0.44	0.27
120	0.30	0.36	0.54	0.69	0.93	1.09	1.32	1.41	1.55	1.55	1.57	1.45	1.35	1.13	0.98	0.75	0.61	0.43	0.27
125	0.29	0.35	0.51	0.65	0.87	1.01	1.22	1.30	1.44	1.44	1.46	1.34	1.26	1.05	0.93	0.72	0.59	0.42	0.27
130	0.29	0.34	0.48	0.60	0.80	0.92	1.11	1.19	1.31	1.31	1.34	1.23	1.16	0.98	0.87	0.68	0.57	0.41	0.27
135	0.28	0.33	0.46	0.56	0.73	0.84	1.01	1.07	1.19	1.19	1.21	1.12	1.06	0.89	0.81	0.64	0.54	0.41	0.27
140	0.28	0.32	0.43	0.51	0.67	0.75	0.90	0.95	1.06	1.06	1.09	1.00	0.95	0.81	0.74	0.60	0.52	0.40	0.27
145	0.27	0.31	0.40	0.47	0.61	0.67	0.80	0.84	0.93	0.92	0.96	0.89	0.86	0.73	0.68	0.56	0.49	0.39	0.27
150	0.26	0.30	0.38	0.43	0.54	0.59	0.70	0.73	0.81	0.81	0.84	0.80	0.76	0.68	0.62	0.54	0.47	0.39	0.27
155	0.00	0.00	0.00	0.00	0.00	0.00	0.00	0.00	0.00	0.00	0.00	0.00	0.00	0.00	0.00	0.00	0.00	0.00	0.00
160	0.00	0.00	0.00	0.00	0.00	0.00	0.00	0.00	0.00	0.00	0.00	0.00	0.00	0.00	0.00	0.00	0.00	0.00	0.00
165	0.00	0.00	0.00	0.00	0.00	0.00	0.00	0.00	0.00	0.00	0.00	0.00	0.00	0.00	0.00	0.00	0.00	0.00	0.00
170	0.00	0.00	0.00	0.00	0.00	0.00	0.00	0.00	0.00	0.00	0.00	0.00	0.00	0.00	0.00	0.00	0.00	0.00	0.00
175	0.00	0.00	0.00	0.00	0.00	0.00	0.00	0.00	0.00	0.00	0.00	0.00	0.00	0.00	0.00	0.00	0.00	0.00	0.00
180	0.00	0.00	0.00	0.00	0.00	0.00	0.00	0.00	0.00	0.00	0.00	0.00	0.00	0.00	0.00	0.00	0.00	0.00	0.00

C Range: 0 - 360DEG

C Interval: 10.0DEG

Test Speed: MEDIUM

Temperature:25.3°C

Operators:

Test Date:14 December 2022

γ Range: 0 - 150DEG

γ Interval: 2.5DEG

Test System:EVERFINE GO-2000A\_V1 SYSTEM V2.00.456

Humidity:65.0%

Test Distance:6.265m [K=1.0000]

Remarks:

## LUMINOUS DISTRIBUTION INTENSITY DATA

NAME: 99LPL094/GBR	TYPE:	WEIGHT: 1
SPEC.:	DIM.: 300 x 110 x 25	SERIAL No.: 0
MFR.: Elmark Industries JSC	SUR.: rectangle	Shielding Angle:

Table--2

UNIT: cd

C (DEG) γ (DEG)	190	200	210	220	230	240	250	260	270	280	290	300	310	320	330	340	350		
0	1.67	1.67	1.67	1.67	1.67	1.67	1.67	1.67	1.67	1.67	1.67	1.67	1.67	1.67	1.67	1.67	1.67		
5	3.54	6.08	8.47	10.8	12.5	14.2	15.0	15.9	15.9	15.7	14.7	13.5	11.7	10.1	8.02	6.04	3.89		
10	5.87	11.0	15.7	20.4	24.0	27.6	29.5	31.4	31.4	31.0	28.8	26.2	22.3	18.8	14.6	10.6	6.28		
15	8.13	15.7	23.0	30.3	36.2	42.0	45.1	48.1	48.1	47.5	43.9	39.8	33.5	28.0	21.3	15.1	8.59		
20	10.29	20.4	30.4	40.7	48.9	57.0	61.3	65.5	65.5	64.6	59.6	54.0	45.2	37.4	28.1	19.5	10.8		
25	12.3	25.0	37.9	51.1	61.7	72.0	77.6	82.9	82.9	81.7	75.4	68.1	56.9	47.0	35.0	23.9	12.9		
30	14.2	29.5	45.2	61.4	74.3	86.8	93.6	99.7	100.0	98.3	90.9	82.1	68.5	56.4	41.8	28.3	14.9		
35	15.9	33.8	52.3	71.3	86.5	101	109	116	117	115	106	95.3	79.7	65.5	48.4	32.5	16.8		
40	17.5	37.9	59.1	80.8	98.1	115	124	132	132	130	120	108	90.4	74.2	54.6	36.4	18.5		
45	18.9	41.7	65.4	89.7	109	128	138	147	147	145	134	120	100	82.3	60.4	40.1	20.1		
50	20.2	45.1	71.2	97.9	119	139	151	161	161	158	146	132	110	89.8	65.7	43.4	21.5		
55	21.2	48.1	76.4	105	128	150	162	173	173	171	157	142	118	96.6	70.5	46.3	22.7		
60	22.1	50.7	81.1	112	136	160	172	184	184	182	167	151	125	103	74.8	48.8	23.7		
65	22.6	52.8	85.0	118	143	168	181	194	194	191	176	158	132	108	78.4	50.9	24.3		
70	22.8	54.6	88.3	122	149	175	188	202	202	199	183	165	137	112	81.4	52.7	24.7		
75	23.0	55.9	90.8	126	153	180	194	208	208	205	188	169	141	115	83.7	54.0	25.0		
80	23.1	56.8	92.4	128	156	183	198	212	212	209	192	173	144	117	85.2	54.9	25.2		
85	23.1	57.1	93.2	130	158	185	200	215	215	212	194	175	145	119	86.0	55.2	25.1		
90	22.7	56.9	93.1	130	158	186	201	215	215	212	195	175	145	119	85.9	55.0	24.9		
95	22.3	56.2	92.3	129	157	185	200	214	214	211	194	174	144	118	85.1	54.4	24.4		
100	21.6	55.0	90.5	126	155	182	196	211	211	208	191	171	142	116	83.5	53.2	23.8		
105	20.7	53.2	87.9	123	151	177	192	206	205	203	186	167	138	113	81.2	51.6	22.9		
110	19.3	51.0	84.6	119	146	172	185	199	199	196	180	162	134	109	78.1	49.5	21.8		
115	15.9	48.3	80.4	113	139	164	177	190	190	187	172	155	128	104	74.3	46.9	18.8		
120	13.1	42.1	75.6	107	131	155	167	180	179	177	162	146	121	97.8	69.9	43.8	14.9		
125	10.9	30.6	70.1	99.2	122	145	156	168	168	166	152	137	113	91.0	64.9	36.1	12.1		
130	9.01	25.3	59.9	90.9	112	133	144	155	154	153	140	126	103	83.5	58.8	24.3	9.98		
135	7.40	20.9	46.8	81.0	101	120	130	140	140	138	126	114	93.4	75.2	45.0	19.7	8.18		
140	5.96	17.9	30.1	64.3	89.0	107	116	124	124	123	112	101	82.5	63.0	37.3	18.9	6.62		
145	4.63	14.2	30.4	43.0	64.5	89.9	99.6	108	108	106	96.9	86.3	63.1	42.8	20.6	15.4	5.22		
150	3.43	10.49	21.5	24.8	38.2	56.1	70.5	83.6	86.3	84.1	71.2	56.3	38.4	20.1	18.4	9.89	3.98		
155	0.00	0.00	0.00	0.00	0.00	0.00	0.00	0.00	0.00	0.00	0.00	0.00	0.00	0.00	0.00	0.00	0.00		
160	0.00	0.00	0.00	0.00	0.00	0.00	0.00	0.00	0.00	0.00	0.00	0.00	0.00	0.00	0.00	0.00	0.00		
165	0.00	0.00	0.00	0.00	0.00	0.00	0.00	0.00	0.00	0.00	0.00	0.00	0.00	0.00	0.00	0.00	0.00		
170	0.00	0.00	0.00	0.00	0.00	0.00	0.00	0.00	0.00	0.00	0.00	0.00	0.00	0.00	0.00	0.00	0.00		
175	0.00	0.00	0.00	0.00	0.00	0.00	0.00	0.00	0.00	0.00	0.00	0.00	0.00	0.00	0.00	0.00	0.00		
180	0.00	0.00	0.00	0.00	0.00	0.00	0.00	0.00	0.00	0.00	0.00	0.00	0.00	0.00	0.00	0.00	0.00		

C Range: 0 - 360DEG

C Interval: 10.0DEG

Test Speed: MEDIUM

Temperature:25.3°C

Operators:

Test Date:14 December 2022

γ Range: 0 - 150DEG

γ Interval: 2.5DEG

Test System:EVERFINE GO-2000A\_V1 SYSTEM V2.00.456

Humidity:65.0%

Test Distance:6.265m [K=1.0000]

Remarks: